

**THE LABOUR FORCE
EDUCATIONAL ATTAINMENT**

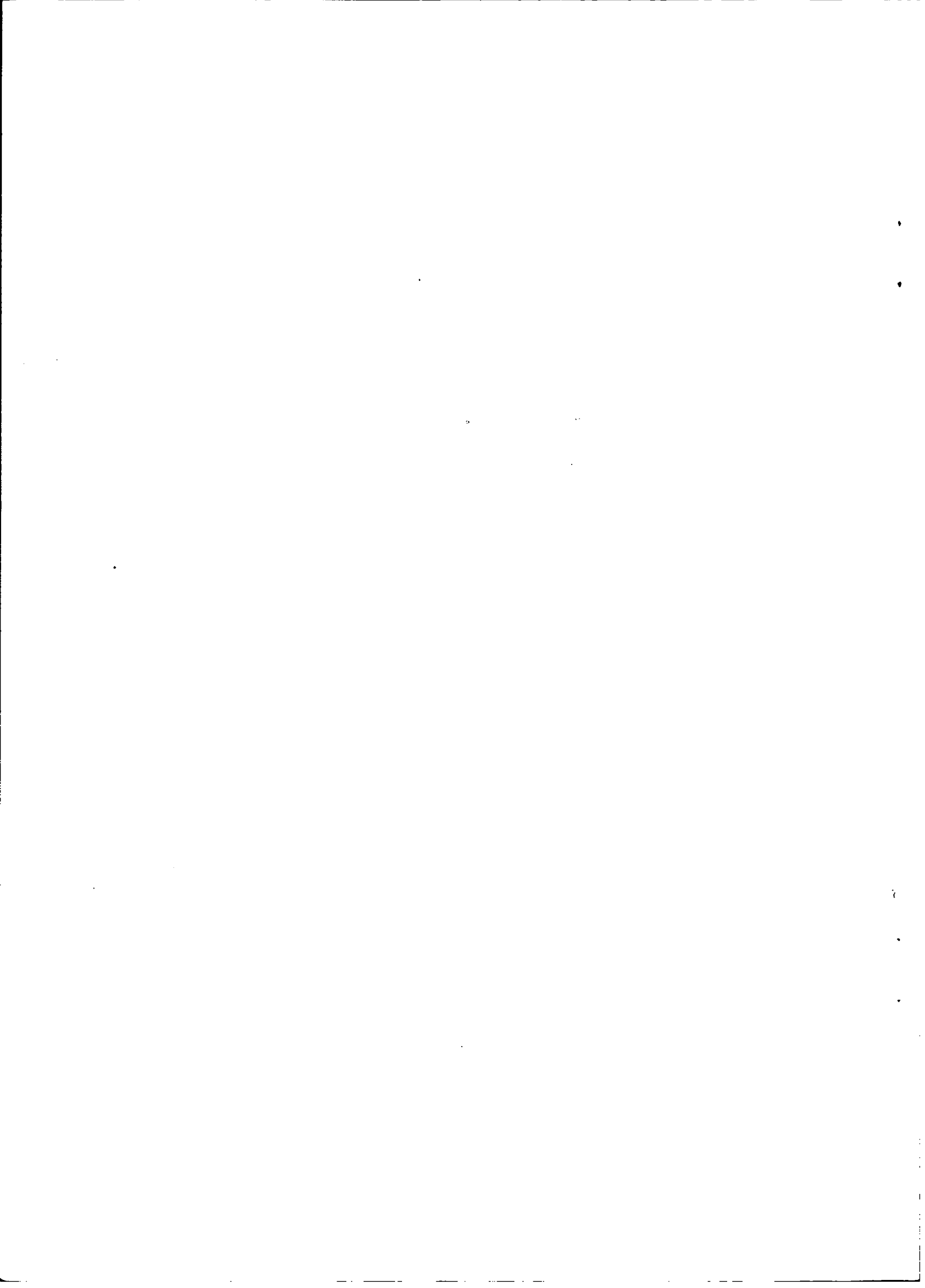
AUSTRALIA

FEBRUARY 1980

R.J. CAMERON
Australian Statistician

AUSTRALIAN BUREAU OF STATISTICS

Catalogue No. 6235.0



INQUIRIES

If you want to know more about these statistics ring Mr Eric Hubbard on Canberra (062) 526507 or our State Office, or write to Information Services, ABS, P.O. Box 10, Belconnen, A.C.T. 2616

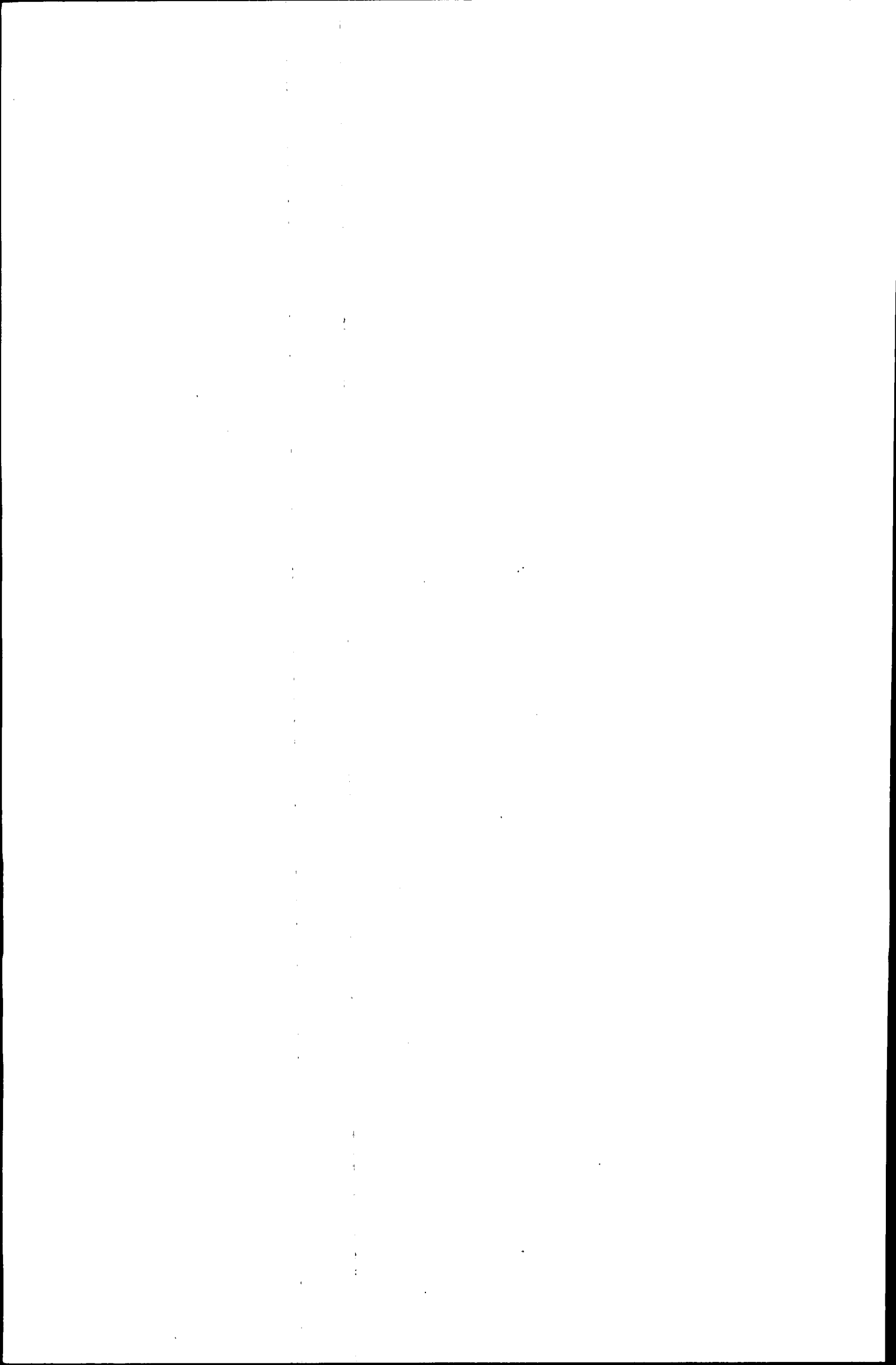
For copies of this publication contact Information Services, Canberra (062) 526627 or State offices.

CATALOGUE NO. 6235.0

NOON 31 OCTOBER 1980

**THE LABOUR FORCE : EDUCATIONAL ATTAINMENT, AUSTRALIA
FEBRUARY 1980****CONTENTS**

<i>Table</i>		<i>Page</i>
..	Main features	2
..	Explanatory notes	2
	Persons in the labour force	
	Educational attainment –	
1	Employment status and full-time or part-time status	4
2	States and Territories and employment status	6
3	Birthplace and period of arrival in Australia	7
4	Occupation	8
5	Industry	9
6	Industry by occupation	10
	Main field of study –	
7	Persons with a degree or equivalent qualification : age	11
8	Persons with a trade or technical level qualification : employment status and age	12
	Employed persons	
9	Educational attainment and age	13
	Unemployed persons	
	Educational attainment –	
10	Duration of current period of unemployment	14
11	Age and unemployment rate	15
..	Technical note	16



MAIN FEATURES

Note: Survey estimates are subject to sampling variability, as explained in paragraph 12 below.

Of the 6,622,300 persons in the labour force in February 1980:

36.6 per cent (2,425,800 persons) had a post-school qualification

445,100 had a degree or equivalent

1,930,400 had a trade or technical level qualification.

62.1 per cent (4,110,400 persons) did not have a post-school qualification

762,500 had attended the highest level of secondary school available

2,246,900 of the remainder had left school at age 15 years or under.

1.3 per cent (86,100 persons) were still at school.

Percentages with post-school qualifications were:

Males	39.5
Females	31.7
Employed persons	37.7
Unemployed persons	21.9

Unemployment rates and average duration of unemployment were:

	Unemploy- ment rate (per cent)	Duration of unemployment (weeks)
Persons with post-school qualifications	4.0	22.7
Persons without post-school qualifications	8.0	29.6

EXPLANATORY NOTES

Introduction

In February 1980 a survey, based on the monthly population survey, was conducted throughout Australia in order to obtain information about the highest educational qualifications attained by persons in the labour force. For persons with post-school qualifications, the information included the field of study, and for those who did not complete their schooling, it included the age at which they had left school.

2. The survey was based on a multi-stage area sample of private dwellings (about 15,000 houses, flats etc.) and non-private dwellings (hotels, motels, institutions, etc.) and covered about one third of one per cent of the population of Australia. The information was obtained from the occupants of selected dwellings by carefully chosen and specially trained interviewers, the interviews being conducted during the two weeks beginning on Monday, 11 February 1980.

Scope

3. The survey included all persons aged fifteen years and over except:

- members of the permanent defence forces
- certain diplomatic personnel of overseas governments, customarily excluded from census and estimated populations
- overseas visitors holidaying in Australia
- members of non-Australian defence forces (and their dependants) stationed in Australia, and
- boarding school students, some patients in hospitals and sanatoria and inmates of reformatories, gaols, etc.

Definitions

4. The labour force category to which a person is assigned depends on his *actual activity* (i.e. whether working, looking for work, etc.) during a specified week known as *the survey week* which is the week immediately preceding that in which the interview takes place. Definitions of the principal labour force categories appearing in this publication are given in *The Labour Force, Australia* (6203.0), but it should be noted that there are slight differences in the estimates for labour force categories shown in these publications. This is due to (a) the different sizes of the samples used (the labour force survey was approximately twice the size of the educational qualifications survey) and (b) the inability to obtain, from a small number of persons, the additional information required for the educational qualifications survey; although the estimation procedures take account of this, estimates for some characteristics will be affected.

5. *Persons with a post-school qualification* are those who had left school and answered 'Yes' to the question: 'Since leaving school have you obtained a certificate, diploma, degree or any other qualification?'

6. *Classification of post-school qualifications.* Respondents indicated which one of the following groups best described their highest qualification:

- Degree or equivalent:* a bachelor degree (including honours), a graduate or post-graduate diploma, masters degree or a doctorate
- Trade, technical:* completion of an approved trade/technician apprenticeship or training course, other certificate or diploma in secretarial or business studies, administration, teaching, nursing, etc.
- Other:* completion of other post-secondary education e.g. adult education, preparatory/bridging course or hobby course.

7. *Classification of field of study.* Respondents with a degree, trade or technical qualification (i.e. (a) or (b) in paragraph 6) indicated the field of study for their highest qualification (See Tables 7 and 8).

8. *Highest level of secondary school available* refers to the highest level of secondary schooling (or equivalent) offered by the education system at the time the respondent left school.

9. *Persons in the labour force but still at school* are those who, although attending school full time, had a full-time or part-time job or were actively seeking full-time or part-time work.

Classification of industry and occupation

10. Industry is classified according to the 1978 *Australian Standard Industrial Classification (ASIC)* and occupation according to the *Classification and Classified List of Occupations, Revised, June 1976*.

Comparability of the estimates

11. For the February 1979 and subsequent surveys, respondents were asked to indicate the group in which their highest qualification was included. For this reason the estimates are not strictly comparable with those from previous population surveys and censuses in which respondents were asked to provide the full name of their highest qualification, and the institution at which it was obtained. The main population survey reports containing details of educational qualifications are *Income Distribution 1973-74*, (6502.0, 6504.0) the May 1976, May 1977, and July 1979 issues of *Persons Looking for Work*, (6222.0) and *Migrants in the Labour Force, 1972 to 1976* (6230.0) in which information on the educational attainment of persons in the labour force at November 1974 is shown in Tables 3, 4 and 5.

Reliability of the estimates

12. Since the estimates in this publication are based on information obtained from occupants of a sample of dwellings they are subject to sampling variability; that is they may differ from the figures that would have been produced if all dwellings had been included in the survey. More information on this topic will be found in the technical note, page 16.

Related publications

13. Other ABS publications which may be of interest include:

The Labour Force, Australia (6203.0) – issued monthly

Leavers from Schools, Universities and Other Educational Institutions May 1979(6227.0)

Income Distribution, 1973-74 –

Part 1 (Tables on Individuals) (6502.0)

Part 3 (Supplementary Tables) (6504.0)

Migrants in the Labour Force, 1972 to 1976 (6230.0)

Persons Looking for Work, Australia, July 1979 (6222.0)

14. Current publications produced by the ABS are listed in *Catalogue of Publications* (1101.0) which is available free of charge from any ABS office.

Symbols and other usages

* subject to sampling variability too high for most practical uses. See paragraph 12 above.
n.e.c. not elsewhere classified

Because figures have been rounded, discrepancies may occur between sums of the component items and totals.

TABLE 1. PERSONS IN THE LABOUR FORCE : EDUCATIONAL ATTAINMENT, EMPLOYMENT STATUS AND FULL-TIME OR PART-TIME STATUS, FEBRUARY 1980

Educational attainment	Employed			Proportion (per cent)	Unemployed			Proportion (per cent)	Total labour force			Proportion (per cent)
	Number ('000)				Number ('000)				Number ('000)			
	Full time	Part time	Total		Looking for -				Full time	Part time	Total	
					Full-time work	Part-time work	Total					
MALES												
With post-school qualifications	1,544.2	57.0	1601.1	40.5	45.7	*	50.5	22.0	1,589.9	61.8	1,651.6	39.5
Degree or equivalent	291.9	18.4	310.3	7.9	9.2	*	10.7	4.7	301.1	19.9	321.0	7.7
Trade, technical level	1,228.9	37.4	1,266.3	32.1	34.7	*	38.0	16.5	1,263.6	40.7	1,304.3	31.2
Other	23.4	*	24.5	0.6	*	*	*	*	25.2	*	26.3	0.6
Without post-school qualifications	2,205.9	111.3	2,317.2	58.7	164.3	*	169.9	74.0	2,370.3	116.9	2,487.2	59.5
Attended highest level of secondary school available	417.8	34.5	452.3	11.4	20.3	*	22.7	9.9	438.1	37.0	475.0	11.4
Did not attend highest level of secondary school available and left at age -												
18 years or over	29.9	*	31.6	0.8	*	*	*	*	31.8	*	34.0	0.8
16 or 17 years	519.0	13.6	532.5	13.5	51.0	*	51.5	22.4	569.9	14.1	584.1	14.0
14 or 15 years	1,027.2	49.8	1,077.0	27.3	82.5	*	84.5	36.8	1,109.7	51.8	1,161.5	27.8
13 years or under	199.8	10.5	210.3	5.3	8.6	*	8.6	3.7	208.3	10.5	218.8	5.2
Total	1,775.9	75.5	1,851.4	46.9	143.9	*	147.0	64.0	1,919.7	78.6	1,998.4	47.8
Never went to school (a)	12.3	*	13.5	0.3	*	*	*	*	12.5	*	13.7	0.3
Still at school	*	31.2	32.4	0.8	*	*	9.3	4.0	6.2	35.5	41.7	1.0
Total	3,751.3	199.4	3,950.8	100.0	215.0	14.7	229.7	100.0	3,966.3	214.1	4,180.5	100.0
MARRIED WOMEN (b)												
With post-school qualifications	270.9	185.4	456.4	33.0	11.6	12.2	23.9	28.1	282.6	197.7	480.2	32.7
Degree or equivalent	46.5	22.7	69.2	5.0	*	*	*	*	46.7	23.6	70.3	4.8
Trade, technical level	218.0	156.3	374.3	27.1	11.0	11.4	22.4	26.3	229.0	167.7	396.7	27.0
Other	6.4	6.4	12.8	0.9	*	*	*	*	6.8	6.4	13.3	0.9
Without post-school qualifications (c)	519.2	407.4	926.6	67.0	37.6	23.5	61.0	71.9	556.8	430.9	987.7	67.3
Attended highest level of secondary school available	67.3	41.6	108.9	7.9	*	*	6.2	7.4	72.0	43.2	115.1	7.8
Did not attend highest level of secondary school available and left at age -												
18 years or over	7.1	*	10.0	0.7	*	*	*	*	7.1	*	10.5	0.7
16 or 17 years	130.4	87.1	217.5	15.7	8.7	6.2	14.9	17.6	139.2	93.3	232.4	15.8
14 or 15 years	259.8	243.6	503.3	36.4	20.7	13.1	33.7	39.7	280.4	256.6	537.0	36.6
13 years or under	51.7	31.6	83.2	6.0	*	*	*	*	54.8	33.8	88.7	6.0
Total	448.9	365.2	814.1	58.9	32.6	21.9	54.5	64.2	481.5	387.1	868.6	59.2
Still at school	*	*	*	*	*	*	*	*	*	*	*	*
Total	790.1	592.9	1,383.0	100.0	49.2	35.7	84.9	100.0	839.3	628.6	1,467.9	100.0

For footnotes see next page.

TABLE 1. PERSONS IN THE LABOUR FORCE : EDUCATIONAL ATTAINMENT, EMPLOYMENT STATUS AND FULL-TIME OR PART-TIME STATUS, FEBRUARY 1980— *continued*

Educational attainment	Employed				Unemployed				Total labour force			
	Number ('000)			Proportion (per cent)	Number ('000)			Proportion (per cent)	Number ('000)			Proportion (per cent)
	Full time	Part time	Total		Looking for —				Full time	Part time	Total	
				Full-time work	Part-time work	Total						
ALL FEMALES												
With post-school qualifications	510.2	217.7	727.8	32.7	31.5	14.9	46.4	21.8	541.6	232.6	774.2	31.7
Degree or equivalent	89.6	29.8	119.4	5.4	*	*	*	*	93.0	31.0	124.0	5.1
Trade, technical level	407.6	178.6	586.2	26.3	26.3	13.6	39.9	18.7	433.9	192.2	626.1	25.6
Other	12.9	9.3	22.2	1.0	*	*	*	*	14.7	9.3	24.0	1.0
Without post-school qualifications (c)	967.4	498.6	1,466.0	65.8	122.1	35.1	157.2	73.8	1,089.5	533.7	1,623.2	66.5
Attended highest level of secondary school available	186.2	72.0	258.2	11.6	22.0	7.3	29.3	13.7	208.2	79.3	287.5	11.8
Did not attend highest level of secondary school available and left at age —												
18 years or over	10.7	*	14.5	0.6	*	*	*	*	12.4	*	16.8	0.7
16 or 17 years	289.8	110.2	400.0	17.9	39.2	8.0	47.2	22.2	329.0	118.2	447.2	18.3
14 or 15 years	417.3	275.3	692.6	31.1	50.9	16.9	67.8	31.8	468.2	292.2	760.4	31.1
13 years or under	60.4	36.8	97.2	4.4	6.7	*	9.0	4.2	67.2	39.0	106.2	4.3
Total	778.2	426.0	1,204.2	54.0	98.5	27.8	126.3	59.3	876.7	453.8	1,330.5	54.5
Still at school	*	33.3	34.9	1.6	*	6.7	9.5	4.5	*	40.0	44.4	1.8
Total	1,479.2	749.6	2,228.7	100.0	156.4	56.7	213.1	100.0	1,635.6	806.2	2,441.8	100.0
PERSONS												
With post-school qualifications	2,054.3	274.7	2,329.0	37.7	77.2	19.7	96.9	21.9	2,131.5	294.3	2,425.8	36.6
Degree or equivalent	381.5	48.2	429.7	7.0	12.6	*	15.4	3.5	394.1	51.0	445.1	6.7
Trade, technical level	1,636.5	216.0	1,852.5	30.0	61.0	16.9	77.9	17.6	1,697.5	232.9	1,930.4	29.2
Other	36.3	10.4	46.7	0.8	*	*	*	*	39.9	10.4	50.3	0.8
Without post-school qualifications	3,173.4	609.9	3,783.3	61.2	286.4	40.6	327.1	73.9	3,459.8	650.5	4,110.4	62.1
Attended highest level of secondary school available	604.0	106.5	710.5	11.5	42.2	9.8	52.0	11.7	646.3	116.2	762.5	11.5
Did not attend highest level of secondary school available and left at age —												
18 years or over	40.6	*	46.0	0.7	*	*	*	*	44.2	6.5	50.7	0.8
16 or 17 years	808.8	123.8	932.5	15.1	90.1	8.6	98.7	22.3	898.9	132.3	1,031.2	15.6
14 or 15 years	1,444.5	325.1	1,769.6	28.6	133.4	19.0	152.3	34.4	1,577.9	344.0	1,921.9	29.0
13 years or under	260.2	47.3	307.5	5.0	15.3	*	17.5	4.0	275.5	49.5	325.0	4.9
Total	2,554.1	501.5	3,055.6	49.4	242.4	30.9	273.2	61.7	2,796.5	532.4	3,328.9	50.3
Never went to school (a)	15.3	*	17.1	0.3	*	*	*	*	17.1	*	19.0	0.3
Still at school	*	64.5	67.3	1.1	7.8	11.1	18.8	4.3	10.6	75.5	86.1	1.3
Total	5,230.5	949.0	6,179.5	100.0	371.4	71.4	442.8	100.0	5,601.9	1,020.4	6,622.3	100.0

(a) Persons with no formal education. (b) Includes permanently separated. (c) Includes persons with no formal education.

TABLE 2. PERSONS IN THE LABOUR FORCE : EDUCATIONAL ATTAINMENT AND EMPLOYMENT STATUS, FEBRUARY 1980 ('000)

	With post-school qualifications				Without post-school qualifications							Still at school	Total
	Degree or equivalent	Trade, technical level	Other	Total	Attended highest secondary level	Did not attend highest level of secondary school and left at age (years)			Total (a)	Total (b)			
						16-17	14-15	Under 14					
MALES													
N.S.W.	114.8	468.6	9.7	593.0	171.6	204.8	424.4	54.8	690.0	866.7	11.3	1,471.0	
Vic.	91.5	320.4	*	415.1	117.7	177.9	269.0	82.8	550.1	673.2	13.6	1,101.9	
Qld	34.9	205.0	*	244.8	62.2	66.1	202.0	39.5	309.6	373.3	5.6	623.7	
S.A.	29.1	113.6	5.8	148.5	43.9	65.4	98.5	18.3	185.4	229.5	5.0	383.0	
W.A.	26.3	125.8	*	153.6	42.5	43.1	116.3	14.8	175.4	219.2	3.9	376.8	
Tas.	8.0	37.9	*	46.6	20.5	13.5	36.3	3.9	53.9	74.4	*	121.8	
N.T.	3.6	12.1	*	15.7	3.8	6.7	7.4	2.2	17.0	20.8	*	36.5	
A.C.T.	12.9	20.8	*	34.3	12.9	6.6	7.6	2.6	17.1	29.9	*	65.8	
<i>Australia</i>	<i>321.0</i>	<i>1,304.3</i>	<i>26.3</i>	<i>1,651.6</i>	<i>475.0</i>	<i>584.1</i>	<i>1,161.5</i>	<i>218.8</i>	<i>1,998.4</i>	<i>2,487.2</i>	<i>41.7</i>	<i>4,180.5</i>	
FEMALES													
N.S.W.	43.6	240.5	*	290.8	88.7	153.3	262.7	27.1	447.2	539.0	14.7	844.6	
Vic.	40.0	156.5	*	202.1	71.6	145.7	191.2	45.8	392.3	464.3	11.3	677.7	
Qld	14.1	79.5	*	97.6	43.7	56.4	131.0	14.7	203.1	247.4	7.4	352.5	
S.A.	9.3	53.6	4.5	67.3	29.1	46.8	67.3	9.8	124.6	154.3	4.9	226.6	
W.A.	8.9	64.7	*	76.3	28.3	25.5	73.0	5.0	104.0	132.7	3.9	212.9	
Tas.	1.7	15.8	*	17.5	16.1	8.2	20.1	2.3	31.2	47.4	*	66.0	
N.T.	*	3.2	*	4.6	2.3	4.7	6.3	*	11.0	13.2	*	18.2	
A.C.T.	5.3	12.3	*	17.9	7.5	6.6	8.8	*	17.2	24.7	*	43.4	
<i>Australia</i>	<i>124.0</i>	<i>626.1</i>	<i>24.0</i>	<i>774.2</i>	<i>287.5</i>	<i>447.2</i>	<i>760.4</i>	<i>106.2</i>	<i>1,330.5</i>	<i>1,623.2</i>	<i>44.4</i>	<i>2,441.8</i>	
PERSONS													
Employed -													
N.S.W.	154.1	689.9	14.8	858.8	246.6	323.9	635.5	75.0	1,044.5	1,298.0	21.4	2,178.2	
Vic.	125.1	457.9	8.8	591.8	175.3	298.3	427.0	124.7	876.2	1,057.3	19.4	1,668.6	
Qld	48.1	269.7	8.6	326.4	97.7	108.5	301.5	51.1	464.1	563.6	9.4	899.4	
S.A.	36.9	156.1	9.0	202.0	68.3	99.1	155.3	26.1	284.1	353.3	7.1	562.3	
W.A.	33.7	181.7	3.7	219.2	64.0	62.3	171.5	18.4	253.5	319.0	6.3	544.5	
Tas.	9.2	51.6	*	61.4	33.4	18.3	51.8	6.1	76.9	110.4	*	173.3	
N.T.	4.7	14.9	*	19.9	6.1	10.4	12.5	2.2	25.7	31.9	*	52.0	
A.C.T.	18.0	30.7	*	49.5	19.2	11.7	14.4	3.9	30.6	49.8	*	101.3	
<i>Australia</i>	<i>429.7</i>	<i>1,852.5</i>	<i>46.7</i>	<i>2,329.0</i>	<i>710.5</i>	<i>932.5</i>	<i>1,769.6</i>	<i>307.5</i>	<i>3,055.6</i>	<i>3,783.3</i>	<i>67.3</i>	<i>6,179.5</i>	
Unemployed -													
N.S.W.	*	19.1	*	25.0	13.8	34.2	51.6	*	92.7	107.8	*	137.4	
Vic.	*	19.0	*	25.4	14.0	25.4	33.2	*	66.2	80.2	*	111.0	
Qld	*	14.8	*	16.1	8.2	14.0	31.5	*	48.6	57.1	*	76.8	
S.A.	*	11.1	*	13.9	4.7	13.0	10.5	*	25.8	30.5	*	47.3	
W.A.	*	8.9	*	10.7	6.8	6.3	17.8	*	25.8	32.9	*	45.2	
Tas.	*	2.1	*	2.7	3.2	3.4	4.6	*	8.2	11.4	*	14.5	
<i>Australia (c)</i>	<i>15.4</i>	<i>77.9</i>	<i>*</i>	<i>96.9</i>	<i>52.0</i>	<i>98.7</i>	<i>152.3</i>	<i>17.5</i>	<i>273.2</i>	<i>327.1</i>	<i>18.8</i>	<i>442.8</i>	
Total -													
N.S.W.	158.4	709.1	16.4	883.9	260.4	358.1	687.1	81.9	1,137.2	1,405.7	26.0	2,315.6	
Vic.	131.5	476.9	8.8	617.2	189.3	323.6	460.2	128.6	942.4	1,137.6	24.8	1,779.6	
Qld	49.0	284.5	8.9	342.4	105.9	122.5	333.0	54.2	512.7	620.7	13.0	976.2	
S.A.	38.4	167.2	10.3	215.9	73.0	112.1	165.8	28.0	309.9	383.8	9.9	609.5	
W.A.	35.1	190.6	4.2	229.9	70.8	68.6	189.3	19.8	279.4	351.9	7.9	589.7	
Tas.	9.7	53.7	*	64.1	36.6	21.7	56.4	6.2	85.1	121.9	1.8	187.8	
N.T.	4.7	15.4	*	20.3	6.1	11.4	13.7	2.2	28.0	34.1	*	54.7	
A.C.T.	18.2	33.1	*	52.2	20.4	13.2	16.4	4.1	34.2	54.7	*	109.2	
<i>Australia</i>	<i>445.1</i>	<i>1,930.4</i>	<i>50.3</i>	<i>2,425.8</i>	<i>762.5</i>	<i>1,031.2</i>	<i>1,921.9</i>	<i>325.0</i>	<i>3,328.9</i>	<i>4,110.4</i>	<i>86.1</i>	<i>6,622.3</i>	

(a) Includes persons who left school at 18 years or over. (b) Includes persons with no formal education. (c) Includes the Northern Territory and the Australian Capital Territory.

TABLE 3. PERSONS IN THE LABOUR FORCE : EDUCATIONAL ATTAINMENT,
BIRTHPLACE AND PERIOD OF ARRIVAL IN AUSTRALIA, FEBRUARY 1980
(^{'000})

Birthplace and period of arrival	With post-school qualifications			Without post-school qualifications				
	Degree or equivalent	Trade, technical level	Total (a)	Attended highest secondary level	Did not attend highest level of secondary school and left at age (years)		Total (b)	Total (c)
					16 or over	15 or under		
MALES								
Born in Australia	220.2	944.8	1,185.6	355.6	489.4	1,003.4	1,851.4	3,073.5
Born in main English-speaking countries (d)	55.7	183.3	241.8	49.9	49.3	136.9	236.0	480.7
Arrived before 1961	15.4	59.6	75.8	10.2	9.4	50.9	70.5	146.3
1961-1970	15.2	74.5	91.6	21.8	25.1	60.0	106.9	200.5
1971-1978	19.5	40.5	60.2	14.4	13.2	23.5	51.1	112.2
1979-Feb. 1980	*	8.7	14.3	*	*	*	7.5	21.8
Born in other countries	45.2	176.2	224.2	69.6	79.4	240.0	399.7	626.2
Arrived before 1961	20.4	94.5	117.3	29.5	34.1	127.0	195.9	313.2
1961-1970	11.5	47.8	59.6	22.5	29.0	79.1	134.8	195.5
1971-1978	12.1	30.8	43.0	16.7	14.4	31.4	63.7	107.9
1979-Feb. 1980	*	*	*	*	*	*	*	9.5
Total born overseas	100.9	359.5	466.0	119.4	128.6	376.9	635.7	1,106.9
Arrived before 1961	35.9	154.2	193.1	39.7	43.5	177.9	266.4	459.5
1961-1970	26.7	122.4	151.2	44.3	54.1	139.1	241.7	396.1
1971-1978	31.5	71.3	103.2	31.0	27.6	54.9	114.9	220.1
1979-Feb. 1980	6.8	11.7	18.5	*	8.4	8.4	12.8	31.3
Total	321.0	1,304.3	1,651.6	475.0	618.0	1,380.4	2,487.2	4,180.5
FEMALES								
Born in Australia	95.8	474.3	587.3	213.2	378.7	627.9	1,221.4	1,845.7
Born in main English-speaking countries (d)	13.3	84.9	102.5	34.3	36.5	93.2	164.1	271.8
Arrived before 1961	*	23.4	28.4	7.0	11.1	24.2	42.3	70.7
1961-1970	*	29.0	36.2	17.6	18.2	46.6	82.4	121.3
1971-1978	*	23.5	27.1	8.4	*	19.8	32.8	62.5
1979-Feb. 1980	*	9.1	10.8	*	*	*	6.5	17.3
Born in other countries	15.0	67.0	84.4	40.0	48.7	145.4	237.7	324.3
Arrived before 1961	*	26.7	34.0	12.0	17.7	60.3	91.1	125.1
1961-1970	*	25.3	29.3	12.4	17.9	61.8	93.6	124.1
1971-1978	*	14.5	18.9	13.1	12.2	22.3	48.7	68.6
1979-Feb. 1980	*	*	*	*	*	*	*	6.6
Total born overseas	28.3	151.9	186.9	74.3	85.2	238.7	401.8	596.1
Arrived before 1961	9.1	50.1	62.4	18.9	28.7	84.6	133.4	195.7
1961-1970	8.4	54.3	65.5	30.0	36.1	108.5	176.0	245.4
1971-1978	7.3	38.0	46.0	21.6	16.9	42.0	81.5	131.1
1979-Feb. 1980	*	9.6	13.1	*	7.0	7.0	10.8	23.9
Total	124.0	626.1	774.2	287.5	463.9	866.5	1,623.2	2,441.8
PERSONS								
Born in Australia	315.9	1,419.1	1,772.9	568.8	868.1	1,631.3	3,072.9	4,919.2
Born in main English-speaking countries (d)	69.0	268.2	344.4	84.2	85.8	230.1	400.1	752.6
Arrived before 1961	18.8	83.0	104.1	17.2	20.4	75.2	112.8	216.9
1961-1970	20.1	103.5	127.9	39.4	43.3	106.7	189.3	321.8
1971-1978	22.9	64.0	87.3	22.8	17.9	43.3	84.0	174.7
1979-Feb. 1980	7.3	17.8	25.1	*	9.2	9.2	14.0	39.1
Born in other countries	60.1	243.1	308.6	109.5	128.0	385.5	637.4	950.5
Arrived before 1961	26.1	121.2	151.3	41.5	51.8	187.3	287.0	438.3
1961-1970	15.0	73.1	88.9	35.0	46.9	140.9	228.3	319.6
1971-1978	16.0	45.3	61.9	29.8	26.6	53.6	112.4	176.5
1979-Feb. 1980	*	*	6.5	*	6.3	6.3	9.6	16.1
Total born overseas	129.2	511.4	652.9	193.7	213.9	615.6	1,037.5	1,703.1
Arrived before 1961	44.9	204.2	255.5	58.6	72.3	262.5	399.8	655.2
1961-1970	35.1	176.6	216.7	74.3	90.2	247.6	417.7	641.4
1971-1978	38.9	109.2	149.2	52.6	44.5	96.9	196.4	351.2
1979-Feb. 1980	10.3	21.3	31.6	8.2	6.9	8.6	23.6	55.2
Total	445.1	1,930.4	2,425.8	762.5	1,082.0	2,246.9	4,110.4	6,622.3

(a) Includes persons with other post-school qualifications. (b) Includes persons with no formal education. (c) Includes persons still at school. (d) Comprises UK, Ireland, Canada, New Zealand, U.S.A. and South Africa.

TABLE 4. PERSONS IN THE LABOUR FORCE : EDUCATIONAL ATTAINMENT AND OCCUPATION (a), FEBRUARY 1980
(000)

Occupation group	With post-school qualifications			Without post-school qualifications				
	Degree or equivalent	Trade, technical level	Total (b)	Attended highest secondary level	Did not attend highest level of secondary school and left at age (years)		Total (c)	Total (d)
					16 or over	15 or under		
MALES								
Professional, technical, etc.	226.2	166.8	394.5	41.1	16.0	19.0	76.0	470.5
Administrative, executive and managerial	29.9	132.3	165.3	45.8	49.7	103.7	199.4	364.7
Clerical	23.6	59.7	87.0	114.7	68.4	60.7	243.8	331.3
Sales	8.3	59.2	71.5	53.0	53.7	82.9	191.0	273.6
Farmers, fishermen, timber-getters, etc.	8.1	53.5	64.4	43.4	62.7	193.4	301.5	371.3
Miners, quarrymen, etc.	*	7.7	8.2	*	*	17.5	24.5	32.7
Transport and communication	*	66.5	72.0	20.4	35.8	157.5	214.2	287.9
Tradesmen, production-process workers and labourers, n.e.c.	12.5	687.5	705.7	113.5	273.3	631.2	1,026.1	1,741.6
Service, sport and recreation	7.0	63.8	73.3	32.9	34.7	92.9	162.0	240.5
Had not worked for two weeks or more in a full-time job in the last two years (e)	*	7.3	9.7	7.1	19.9	21.6	48.8	66.4
Total	321.0	1304.3	1,651.6	475.0	618.0	1,380.4	2,487.2	4,180.5
FEMALES								
Professional, technical, etc.	96.4	215.9	314.5	43.3	16.2	22.7	82.2	396.9
Administrative, executive and managerial	*	13.9	16.4	*	14.4	19.7	39.4	55.7
Clerical	12.8	204.2	226.9	115.3	183.3	216.3	514.9	748.2
Sales	*	42.4	50.9	38.6	65.7	138.6	244.3	315.0
Farmers, etc.	*	20.4	23.3	11.1	19.3	39.7	70.1	94.9
Transport and communication	*	12.1	13.0	*	12.0	23.7	39.2	52.2
Tradeswomen, production-process workers and labourers, n.e.c.	*	24.2	27.5	16.9	57.1	165.9	241.7	272.0
Service, sport and recreation	*	76.6	82.8	35.2	63.3	200.0	299.5	388.9
Had not worked for two weeks or more in a full-time job in the last two years (e)	*	16.5	19.0	18.1	32.4	39.8	91.6	117.6
Total (f)	124.0	626.1	774.2	287.5	463.9	866.5	1,623.2	2,441.8
PERSONS								
Professional, technical, etc.	322.6	382.7	709.0	84.3	32.2	41.7	158.2	867.4
Administration, executive and managerial	31.8	146.2	181.6	51.1	64.0	123.4	238.8	420.4
Clerical	36.4	263.9	313.9	230.0	251.7	277.0	758.7	1,079.5
Sales	12.1	101.6	122.4	91.6	119.4	221.5	435.3	588.6
Farmers, fishermen, timber-getters, etc.	10.6	73.8	87.7	54.5	82.0	233.1	371.5	466.2
Miners, quarrymen, etc.	*	7.7	8.2	*	*	17.6	24.9	33.1
Transport and communication	*	78.6	85.0	23.9	47.8	181.2	253.4	340.1
Tradesmen, production-process workers and labourers, n.e.c.	14.3	711.7	733.2	130.4	330.4	797.2	1,267.8	2,013.6
Service, sport and recreation	10.2	140.4	156.0	68.2	98.1	292.9	461.5	629.4
Had not worked for two weeks or more in a full-time job in the last two years (e)	*	23.8	28.7	25.2	52.3	61.4	140.3	183.9
Total	445.1	1,930.4	2,425.8	762.5	1,082.0	2,246.9	4,110.4	6,622.3

(a) For persons unemployed at the time of the survey, relates to the last full-time job lasting two weeks or more in the last two years. (b) Includes persons with other post-school qualifications. (c) Includes persons with no formal education. (d) Includes persons still at school. (e) Includes persons who had never worked in a full-time job lasting two weeks or more. (f) Includes miners, etc.

TABLE 5. PERSONS IN THE LABOUR FORCE : EDUCATIONAL ATTAINMENT AND INDUSTRY (a), FEBRUARY 1980 ('000)

Industry division	With post-school qualifications			Without post-school qualifications			Total (c)	Total (d)
	Degree equivalent	Trade, technical level	Total (b)	Attended highest secondary level	Did not attend highest level of secondary school and left at age (years)			
					16 or over	15 or under		
MALES								
Agriculture and services to agriculture	8.2	43.1	53.3	38.1	56.6	171.8	268.0	324.0
Mining	6.0	31.7	37.9	7.4	8.9	25.3	42.1	80.0
Manufacturing	36.4	330.8	372.4	79.7	154.5	346.2	585.6	959.8
Electricity, gas and water	8.1	46.9	56.1	9.4	12.0	39.5	62.1	118.2
Construction	9.7	209.9	220.6	23.8	60.6	162.1	247.8	468.4
Wholesale and retail trade	29.0	226.9	262.3	102.7	130.1	238.6	473.0	758.6
Transport and storage	*	80.5	88.0	27.3	47.5	137.6	212.8	301.0
Communication	*	34.8	40.7	13.4	11.5	28.6	53.5	94.1
Finance, property and business services	52.9	72.7	127.0	61.1	43.7	43.5	148.3	276.2
Public administration and defence (e)	28.9	54.5	85.0	38.4	18.8	38.5	95.7	181.0
Community services	120.3	118.4	240.6	40.1	28.4	64.4	133.8	374.8
Recreation, personal and other services	10.0	46.7	58.0	26.6	25.5	62.8	115.7	178.1
Had not worked for two weeks or more in a full-time job in the last two years (f)	*	7.3	9.7	7.1	19.9	21.6	48.8	66.4
Total	321.0	1,304.3	1,651.6	475.0	618.0	1,380.4	2,487.2	4,180.5
FEMALES								
Agriculture and services to agriculture	*	22.8	25.4	10.4	19.8	41.2	71.3	98.3
Mining	*	*	*	*	*	*	*	6.9
Manufacturing	*	49.2	56.4	29.0	73.5	182.2	286.4	344.1
Electricity, gas and water	*	*	*	*	*	*	8.3	10.7
Construction	*	13.0	13.4	*	9.1	22.1	34.0	47.4
Wholesale and retail trade	10.7	91.7	110.9	61.8	131.6	235.8	430.5	570.1
Transport and storage	*	15.7	17.0	6.1	14.7	18.7	39.5	56.9
Communication	*	*	6.6	*	6.2	15.8	27.2	33.8
Finance, property and business services	7.7	59.9	69.6	42.2	49.8	57.5	149.8	219.6
Public administration and defence (e)	8.4	23.2	32.5	23.6	17.6	22.8	64.0	96.5
Community services	83.7	270.5	358.5	58.7	60.0	125.1	244.6	604.6
Recreation, personal and other services	*	53.0	59.6	26.9	43.2	101.9	172.0	235.5
Had not worked for two weeks or more in a full-time job in the last two years (f)	*	16.5	19.0	18.1	32.4	39.8	91.6	117.6
Total	124.0	626.1	774.2	287.5	463.9	866.5	1,623.2	2,441.8
PERSONS								
Agriculture and services to agriculture	10.7	65.9	78.7	48.5	76.4	212.9	339.3	422.3
Mining	6.3	34.3	40.7	81.1	10.1	27.4	46.1	86.8
Manufacturing	40.8	380.0	428.8	108.7	228.0	528.4	872.0	1,303.9
Electricity, gas and water	8.1	49.3	58.5	11.2	17.0	41.1	70.4	128.9
Construction	9.7	222.9	233.9	26.6	69.6	184.2	281.8	515.8
Wholesale and retail trade	39.8	318.6	373.2	164.5	261.7	474.4	903.5	1,328.8
Transport and storage	6.1	96.2	105.0	33.4	62.2	156.3	252.3	357.9
Communication	*	40.5	47.2	18.7	17.7	44.4	80.7	127.9
Finance, property and business services	60.6	132.6	196.6	103.3	93.5	101.0	298.1	495.7
Public administration and defence (e)	37.3	77.7	117.6	62.0	36.4	61.3	159.7	277.5
Community services	204.0	388.9	599.2	98.8	88.4	189.5	378.4	979.3
Recreation, personal and other services	13.8	99.7	117.7	53.4	68.6	164.7	287.7	413.5
Had not worked for two weeks or more in a full-time job in the last two years (f)	*	23.8	28.7	25.2	52.3	61.4	140.3	183.9
Total	445.1	1,930.4	2,425.8	762.5	1,082.0	2,246.9	4,110.4	6,622.3

(a) For persons unemployed at the time of the survey, relates to the last full-time job lasting two weeks or more in the last two years. (b) Includes persons with other post-school qualifications. (c) Includes persons with no formal education. (d) Includes persons still at school. (e) Excludes permanent defence forces. (f) Includes persons who had never worked in a full-time job lasting two weeks or more.

TABLE 6. PERSONS IN THE LABOUR FORCE : EDUCATIONAL ATTAINMENT, INDUSTRY (a) AND OCCUPATION (a), FEBRUARY 1980 ('000)

Occupation group (a)	Industry division (a)											Total
	Agriculture, forestry, fishing and hunting	Mining	Manufacturing	Construction	Wholesale and retail trade	Transport and storage	Finance, property and business services	Community services	Public administration and defence (b)	Recreation, personal and other services	Other industries	
WITH POST-SCHOOL QUALIFICATIONS												
Professional, technical, etc.	*	7.8	49.9	13.4	33.7	7.1	64.4	454.0	38.5	14.7	25.0	709.0
Administrative, executive and managerial	*	*	37.9	13.5	66.5	*	21.0	6.5	14.9	13.1	*	181.6
Clerical	*	*	41.6	13.5	50.7	15.0	67.9	49.4	45.0	12.6	12.7	313.9
Sales	*	*	10.7	*	85.0	*	20.3	*	*	*	*	122.4
Farmers, fishermen, timber-getters, etc.	27.7	*	*	*	*	*	*	*	*	6.5	*	87.7
Miners, quarrymen and related workers	*	8.2	*	*	*	*	*	*	*	*	*	8.2
Transport and communication	*	*	7.7	*	6.6	47.9	*	*	*	*	12.1	85.0
Tradesmen, production-process workers and labourers, n.e.c.	*	19.1	277.4	187.7	127.7	26.0	9.3	16.2	11.1	*	51.7	733.2
Service, sport and recreation	*	*	*	*	*	*	12.0	66.2	*	62.1	*	156.0
Total	78.7	40.7	428.8	233.9	373.2	105.0	196.6	599.2	117.6	117.7	105.7	(c) 2,425.8
WITHOUT POST-SCHOOL QUALIFICATIONS BUT ATTENDED HIGHEST LEVEL OF SECONDARY SCHOOL AVAILABLE												
Professional, technical, etc.	*	*	10.0	*	*	*	10.1	41.5	7.7	6.2	*	84.3
Administrative, executive and managerial	*	*	9.2	*	22.0	*	7.5	*	*	*	*	51.1
Clerical	*	*	21.5	*	29.6	13.1	70.0	20.5	50.3	7.2	13.5	230.0
Sales	*	*	6.7	*	73.5	*	8.1	*	*	*	*	91.6
Farmers, fishermen, timber-getters, etc.	43.7	*	*	*	*	*	*	6.4	*	*	*	54.5
Transport and communication	*	*	*	*	*	12.6	*	*	*	*	*	23.9
Tradesmen, production-process workers and labourers, n.e.c., and miners, etc.	*	*	57.0	20.4	26.5	*	*	*	*	*	8.1	130.4
Service, sport and recreation	*	*	*	*	*	*	6.6	21.0	*	30.1	*	68.2
Total	48.5	8.1	108.7	26.6	164.5	33.4	103.3	98.8	62.0	53.4	29.9	(c) 762.5
WITHOUT POST-SCHOOL QUALIFICATIONS AND DID NOT ATTEND HIGHEST LEVEL OF SECONDARY SCHOOL AVAILABLE (d)												
Professional, technical, etc.	*	*	10.9	*	*	*	*	34.3	9.0	10.6	*	73.9
Administrative, executive and managerial	*	*	22.9	10.4	91.2	12.5	16.8	*	*	22.2	*	187.4
Clerical	*	*	81.1	25.9	116.2	36.3	110.8	49.6	52.8	29.9	21.2	528.6
Sales	*	*	14.0	*	295.7	*	15.9	*	*	9.4	*	340.9
Farmers, fishermen, timber-getters, etc.	276.9	*	*	*	*	*	*	9.6	*	9.1	*	315.1
Miners, quarrymen and related workers	*	19.5	*	*	*	*	*	*	*	*	*	21.8
Transport and communication	*	*	30.1	10.5	23.8	103.4	*	8.3	6.3	*	32.8	228.9
Tradesmen, production-process workers and labourers, n.e.c.	*	8.8	570.5	198.5	177.8	51.8	9.6	24.5	15.0	10.3	57.8	1,127.5
Service, sport and recreation	*	*	19.7	*	22.0	10.2	28.5	145.9	12.4	140.2	*	391.0
Total	289.3	37.5	756.4	253.8	736.1	218.4	194.6	277.9	97.7	233.3	120.1	(c) 3,328.9

(a) For persons unemployed at the time of the survey, relates to last full-time job lasting two weeks or more in the last two years. (b) Excludes permanent defence forces. (c) Includes unemployed persons who had not worked for two weeks or more in a full-time job in the last two years or who had never worked. (d) Excludes persons still at school and persons who never went to school.

TABLE 7. PERSONS IN THE LABOUR FORCE WHOSE HIGHEST EDUCATIONAL ATTAINMENT WAS A DEGREE OR EQUIVALENT LEVEL QUALIFICATION: MAIN FIELD OF STUDY AND AGE, FEBRUARY 1980 ('000)

Main field of study	Age groups (years)				Total
	15-24	25-44	45-54	55 and over	
MALES					
Administration, business studies, commerce, economics, etc. (a)	8.4	38.0	7.7	8.3	62.4
Law	*	12.7	*	*	17.4
Education, teacher training	*	19.1	6.8		27.3
Medicine, dentistry, pharmacy, nursing	*	23.8	10.0	8.6	44.2
Science, mathematics, computing, etc. (b)	9.4	38.8	10.8	*	64.4
Engineering, telecommunication, transport, surveying	*	28.5	9.2	*	47.3
Arts, humanities, social studies, etc. (c)	6.7	28.2	*	*	43.5
Architecture, town planning	*	7.9		*	9.2
Other	*	*	*	*	*
Total	34.6	197.7	53.2	35.6	321.0
FEMALES					
Administration, business studies, commerce, economics, etc. (a)	*	7.0	*	*	13.1
Law	*	*	*	*	*
Education, teacher training	*	18.8	6.3		30.9
Medicine, dentistry, pharmacy, nursing	*	10.6	*	*	16.7
Science, mathematics, computing, etc. (b)	*	11.5	*	*	17.3
Engineering, telecommunication, transport, surveying	*	*	*	*	*
Arts, humanities, social studies, etc. (c)	8.9	24.4	6.5	*	41.1
Architecture, town planning	*	*	*	*	*
Other	*	*	*	*	*
Total	27.0	74.7	16.6	*	124.0
PERSONS					
Administration, business studies, commerce, economics, etc. (a)	10.8	45.0	9.2	10.5	75.5
Law	*	13.7	*	*	19.7
Education, teacher training	7.2	37.9	8.3	*	58.2
Medicine, dentistry, pharmacy, nursing	7.0	34.4	10.9	8.6	60.8
Science, mathematics, computing, etc. (b)	12.1	50.4	14.0	*	81.7
Engineering, telecommunication, transport, surveying	*	28.9	9.4	*	48.8
Arts, humanities, social studies, etc. (c)	15.6	52.7	12.3	*	84.6
Architecture, town planning	*	6.6	*	*	10.3
Other	*	*	*	*	*
Total	61.6	272.4	69.9	41.2	445.1

(a) Includes accounting and secretarial studies. (b) Includes veterinary and agricultural science, statistics, computer programming, chemistry and physics. (c) Includes languages, history, politics, philosophy, psychology, social welfare, religion, geography, art and music.

TABLE 8. PERSONS IN THE LABOUR FORCE WHOSE HIGHEST EDUCATIONAL ATTAINMENT WAS A TRADE OR TECHNICAL LEVEL QUALIFICATION : MAIN FIELD OF STUDY, EMPLOYMENT STATUS AND AGE, FEBRUARY 1980 ('000)

Main field of study	Total labour force							
	Employed	Unemployed	Age group (years)				Total	
			15-24	25-44	45-55	55 and over		
MALES								
All trades –								
Metal	199.4	6.3	30.3	113.0	38.5	23.9	205.7	
Electrical	110.3	*	23.7	62.0	18.2	8.7	112.6	
Building	188.5	7.6	29.4	111.4	36.2	19.1	196.1	
Automotive	132.8	*	22.5	84.8	15.2	13.9	136.4	
Other	182.0	7.9	29.9	104.1	37.4	18.5	189.9	
Total	813.1	27.7	135.8	475.4	145.6	84.1	840.8	
Teacher training	51.6	*	6.5	35.2	6.4	*	52.0	
Typing, secretarial studies, data processing	7.5	*	*	*	*	*	7.5	
Health, para-medical, etc. (a)	27.3	*	*	14.1	*	*	27.7	
Engineering, telecommunication, etc. (b)	119.7	*	14.3	69.4	27.8	10.5	121.9	
Administration, law, commerce, etc. (c)	120.3	} 7.2	{ *	75.8	24.6	16.5	122.1	
Science, computing, humanities, etc. (d)	40.8			29.4	6.4	*	42.5	
Other	86.1			13.4	46.5	16.3	13.5	89.8
Total	1,266.3	38.0	185.9	749.1	234.1	135.2	1,304.3	
FEMALES								
All trades	59.5	*	14.9	35.6	8.1	*	63.3	
Teacher training	99.6	*	20.7	64.3	14.3	*	103.9	
Typing, secretarial studies, data processing	194.8	19.4	93.6	88.8	21.6	10.2	214.2	
Health, para-medical, etc. (a)	160.9	7.1	41.7	86.3	29.5	10.5	168.0	
Engineering, telecommunication, etc. (b)	9.0	*	*	*	*	*	9.0	
Administration, law, commerce, etc. (c)	18.3	*	*	12.5	*	*	20.5	
Science, computing, humanities, etc. (d)	22.1	*	*	13.9	*	*	23.3	
Other	22.2	*	8.5	9.3	*	*	24.1	
Total	586.2	39.9	187.4	315.8	85.8	37.2	626.1	
PERSONS								
All trades –								
Metal	205.5	6.3	32.3	116.1	39.0	24.4	211.8	
Electrical	111.7	*	23.7	63.4	18.2	8.7	114.0	
Building	195.4	8.8	30.8	115.7	37.7	20.0	204.2	
Automotive	139.1	*	23.9	89.0	15.8	14.1	142.8	
Other	221.0	10.3	39.9	126.8	43.0	21.7	231.3	
Total	872.6	31.5	150.6	510.9	153.7	88.8	904.1	
Teacher training	151.2	*	27.2	99.5	20.6	8.5	155.9	
Typing, secretarial studies, data processing	202.3	19.4	94.9	92.2	23.2	11.4	221.7	
Health, para-medical, etc. (a)	188.2	7.5	46.1	100.4	34.8	14.4	195.7	
Engineering, telecommunication, etc. (b)	128.6	*	16.4	74.4	28.9	11.2	130.9	
Administration, law, commerce, etc. (c)	138.6	} 12.5	{ 7.5	88.3	28.3	18.6	142.6	
Science, computing, humanities, etc. (d)	62.9			8.6	43.3	9.5	*	65.8
Other	108.3			21.9	55.8	20.8	15.3	113.8
Total	1,852.5	77.9	373.3	1,064.9	319.9	172.4	1,930.4	

(a) Includes nursing and health therapy. (b) Includes architecture, surveying, drafting and town planning. (c) Includes business administration, economics and bookkeeping. (d) Includes social studies, social welfare, veterinary and agricultural science, chemistry, languages, arts, crafts and music.

TABLE 9. EMPLOYED PERSONS : EDUCATIONAL ATTAINMENT AND AGE, FEBRUARY 1980

Educational attainment	Age group (years)						Total	per cent
	15-19	20-24	25-34	35-44	45-54	55 and over		
- '000 -								
MALES								
With post-school qualifications (a)	20.2	192.7	541.2	393.5	286.4	167.2	1,601.1	40.5
Degree or equivalent	*	31.8	120.8	70.7	52.0	35.1	310.3	7.9
Trade, technical level	18.6	158.2	410.8	318.2	230.3	130.1	1,266.3	32.1
Without post-school qualifications (b)	311.3	317.7	525.0	435.1	403.9	324.3	2,317.2	58.7
Attended highest level of secondary school available	80.0	120.2	121.8	57.6	42.9	29.8	452.3	11.4
Did not attend highest level of secondary school available	231.3	197.5	401.8	373.4	356.4	290.9	1,851.4	46.9
Total (c)	363.9	510.5	1,066.2	828.5	690.2	491.4	3,950.8	100.0
FEMALES								
With post-school qualifications (a)	43.2	157.8	230.9	150.9	100.8	44.2	727.8	32.7
Degree or equivalent	*	24.5	49.7	22.9	16.6	*	119.4	5.4
Trade, technical level	42.4	129.0	173.9	124.0	80.7	36.3	586.2	26.3
Without post-school qualifications (b)	225.2	237.0	338.3	328.4	228.7	108.4	1,466.0	65.8
Attended highest level of secondary school available	61.3	69.5	60.2	33.8	21.6	11.8	258.2	11.6
Did not attend highest level of secondary school available	163.9	167.5	277.0	293.4	206.7	95.7	1,204.2	54.0
Total (c)	302.3	395.7	569.3	479.3	329.5	152.6	2,228.7	100.0
PERSONS								
With post-school qualifications (a)	63.4	350.5	772.1	544.4	387.1	211.4	2,329.0	37.7
Degree or equivalent	*	56.3	170.5	93.6	68.6	40.8	429.7	7.0
Trade, technical level	61.1	287.2	584.7	442.2	311.0	166.5	1,852.5	30.0
Without post-school qualifications (b)	536.5	554.7	863.3	763.4	632.6	432.7	3,783.3	61.2
Attended highest level of secondary school available	141.3	189.7	182.1	91.4	64.4	41.6	710.5	11.5
Did not attend highest level of secondary school available	395.2	365.0	678.8	666.8	563.1	386.6	3,055.6	49.4
Total (c)	666.3	906.2	1,635.4	1,307.8	1,019.7	644.1	6,179.5	100.0

(a) Includes a small number of persons with other post-school qualifications. (b) Includes persons with no formal education. (c) Includes persons still at school.

TABLE 10. UNEMPLOYED PERSONS : EDUCATIONAL ATTAINMENT AND DURATION OF CURRENT PERIOD OF UNEMPLOYMENT, FEBRUARY 1980

Educational attainment	Duration of current period of unemployment (weeks)						Total	Average duration of current period of unemployment (weeks)
	1 and under 4	4 and under 8	8 and under 13	13 and under 26	26 and under 52	52 and over		
- '000 -								
MALES								
With post-school qualifications (a)	9.2	13.3	8.8	*	7.2	7.5	50.5	24.0
Degree or equivalent	*	7.2	8.8	*	*	*	10.7	18.6
Trade, technical level	8.6	9.5	*	*	6.1	*	38.0	24.6
Without post-school qualifications (b)	29.0	23.0	30.5	29.0	22.9	35.6	169.9	30.6
Attended highest level of secondary school available	*	*	*	*	*	*	22.7	15.7
Did not attend highest level of secondary school available	24.4	19.0	25.0	24.6	19.4	34.5	147.0	32.9
Total (c)	41.4	38.9	40.6	34.4	30.4	44.0	229.7	28.4
FEMALES								
With post-school qualifications (a)	14.2	6.9	7.5	6.7	*	7.7	46.4	21.4
Degree or equivalent	*	*	*	*	*	*	*	*
Trade, technical level	11.9	6.7	6.4	6.1	*	6.6	39.9	20.6
Without post-school qualifications (b)	38.3	23.0	28.6	18.0	16.6	32.7	157.2	28.6
Attended highest level of secondary school available	6.3	6.5	9.9	6.5	6.5	6.5	29.3	20.6
Did not attend highest level of secondary school available	32.0	16.4	23.9	12.5	13.2	28.2	126.3	29.7
Total (c)	55.2	31.3	38.4	25.0	21.4	41.7	213.1	26.5
PERSONS								
With post-school qualifications (a)	23.4	20.2	16.3	11.2	10.5	15.2	96.9	22.7
Degree or equivalent	6.3	6.3	6.8	6.8	6.8	*	15.4	20.1
Trade, technical level	20.5	16.2	11.6	9.6	8.2	11.8	77.9	22.5
Without post-school qualifications (b)	67.3	45.9	59.1	47.0	39.4	68.3	327.1	29.6
Attended highest level of secondary school available	10.7	10.5	9.9	9.9	6.4	*	52.0	18.5
Did not attend highest level of secondary school available	56.5	35.4	48.9	37.1	32.7	62.7	273.2	31.4
Total (c)	96.5	70.2	79.0	59.5	51.8	85.7	442.8	27.5

(a) Includes a small number of persons with other post-school qualifications. (b) Includes persons with no formal education. (c) Includes persons still at school.

TABLE 11. UNEMPLOYED PERSONS : EDUCATIONAL ATTAINMENT, AGE AND UNEMPLOYMENT RATE, FEBRUARY 1980

Educational attainment	Age group (years)						Total	Unemployment rate (a) per cent
	15-19	20-24	25-34	35-44	45-54	55 and over		
- '000 -								
MALES								
With post-school qualifications (b)	*	11.0	20.1	6.8	10.7	8.1	50.5	3.1
Degree or equivalent	*		8.1	*	*	*	10.7	3.3
Trade, technical level	*	7.7	14.5	*	8.8		38.0	2.9
Without post-school qualifications (c)	59.2	43.3	30.2	16.9	12.2	8.1	169.9	6.8
Attended highest level of secondary school available	7.5	9.1	*	*	*	*	22.7	4.8
Did not attend highest level of secondary school available	51.7	34.2	25.6	16.0	11.8	7.6	147.0	7.4
Total (d)	70.1	54.6	50.4	23.7	17.4	13.6	229.7	5.5
FEMALES								
With post-school qualifications (b)	10.4	9.3	16.1	9.7		2.0	46.4	6.0
Degree or equivalent	*	*	*	*	*	*	*	*
Trade, technical level	9.3	6.7	13.3	9.7		0.5	39.9	6.4
Without post-school qualifications (c)	65.3	34.2	28.2	13.2	12.4	3.0	157.2	9.7
Attended highest level of secondary school available	15.2	8.7	*	*	*	*	29.3	10.2
Did not attend highest level of secondary school available	50.1	25.5	24.9	12.6	10.2	3.0	126.3	9.5
Total (d)	85.2	43.4	44.3	17.9	17.5	*	213.1	8.7
PERSONS								
With post-school qualifications (b)	12.3	20.3	36.2	11.4	10.3	6.4	96.9	4.0
Degree or equivalent	*	*	7.4	*	*	*	15.4	3.5
Trade, technical level	10.6	14.5	27.8	10.3	8.8	5.7	77.9	4.0
Without post-school qualifications (c)	124.5	77.5	58.4	30.1	24.6	11.9	327.1	8.0
Attended highest level of secondary school available	22.7	17.8	7.9	*	*	*	52.0	6.8
Did not attend highest level of secondary school available	101.8	59.7	50.6	28.6	22.0	10.6	273.2	8.2
Total (d)	155.3	98.0	94.6	41.5	34.9	18.4	442.8	6.7

(a) Unemployed persons as a proportion of persons in the labour force in the same group. (b) Includes a small number of persons with other post-school qualifications. (c) Includes persons with no formal education. (d) Includes persons still at school.

